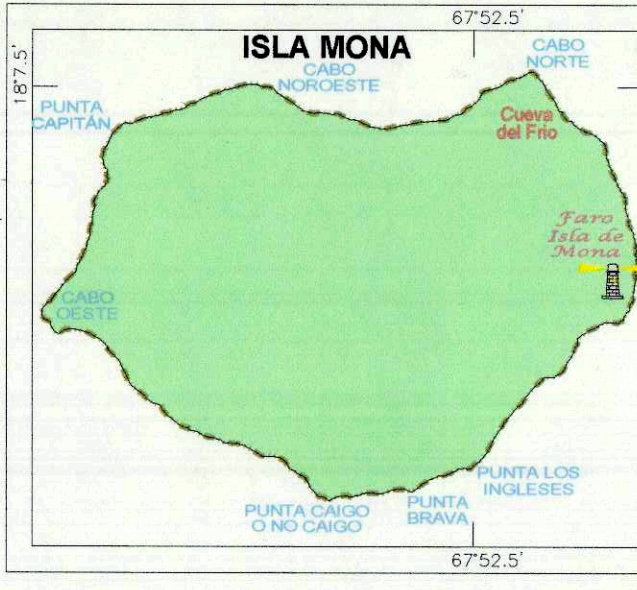
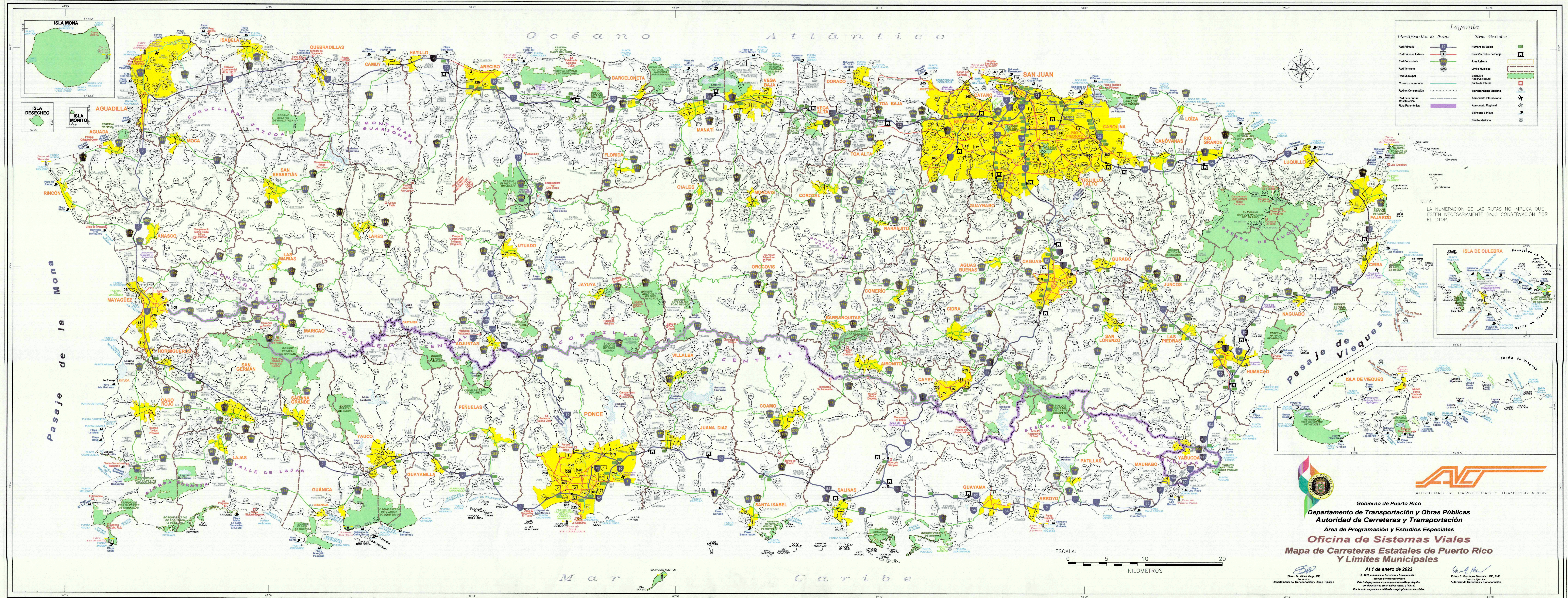


ATTACHMENT 2

FIGURES

FIGURE 1: HIGHWAY TRANSPORTATION SYSTEM MAP OF PUERTO RICO



Legenda

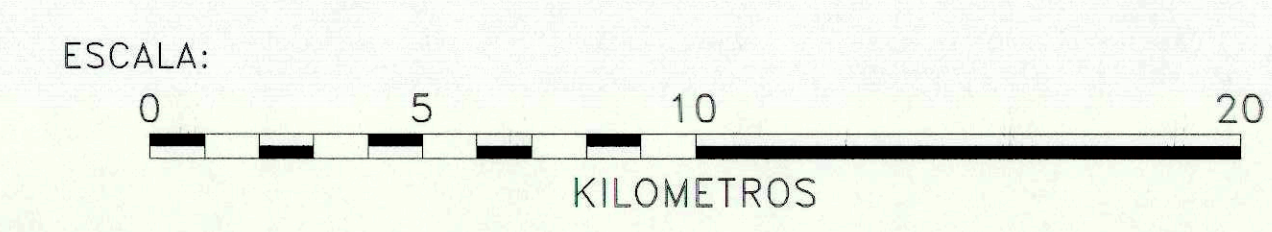
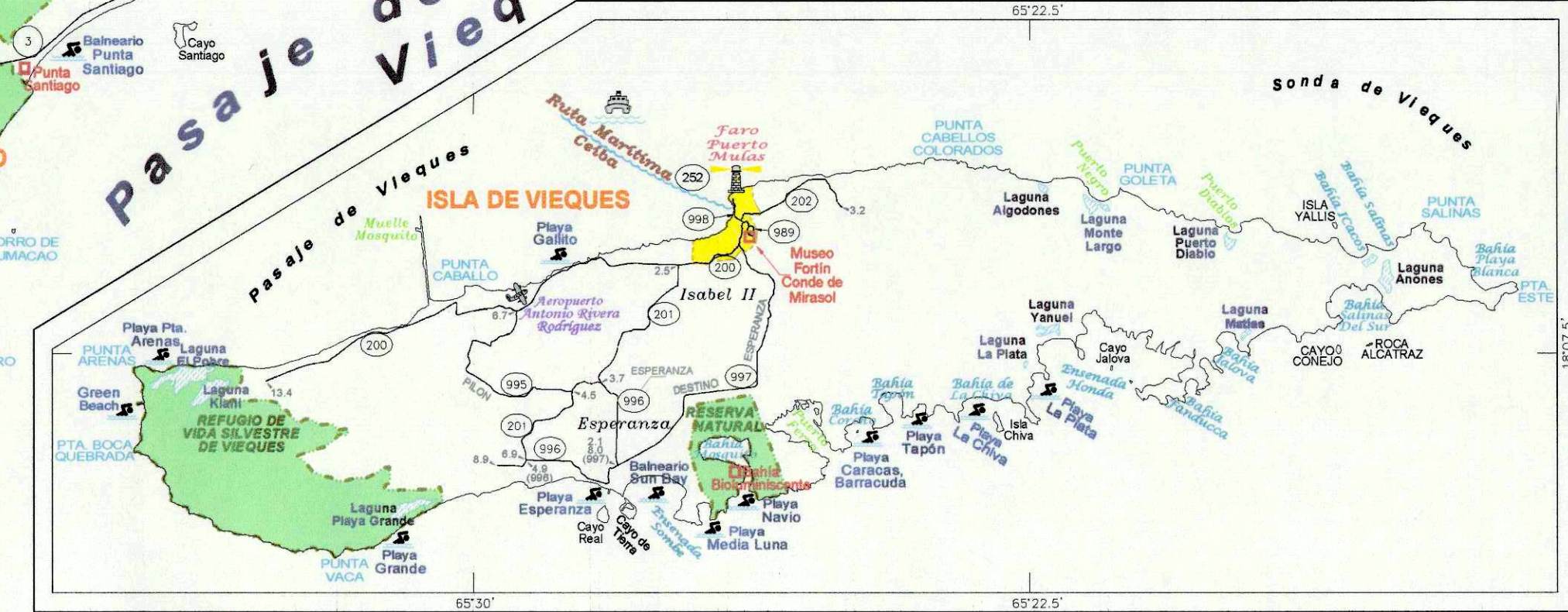
Identificación de Rutas

- Red Primaria
- Red Primaria Urbana
- Red Secundaria
- Red Terciaria
- Red Municipal
- Conector Intermodal
- Red en Construcción
- Red para Futura Construcción
- Ruta Panorámica

Otros Símbolos

- Número de Balsa
- Estación Cobro de Peaje
- Área Urbana
- Límite Municipal
- Bosque o Reserva Natural
- Puerto de Mar
- Transportación Marítima
- Aeropuerto Internacional
- Aeropuerto Regional
- Baño o Playa
- Puerto Marítimo

NOTA:
LA NUMERACION DE LAS RUTAS NO IMPLICA QUE ESTEN NECESARIAMENTE BAJO CONSERVACION POR EL DTOP.



Logo of Autoridad de Carreteras y Transportación (ACT)

Gobierno de Puerto Rico
 Departamento de Transportación y Obras Públicas
 Autoridad de Carreteras y Transportación
 Área de Programación y Estudios Especiales
Oficina de Sistemas Viales
Mapa de Carreteras Estatales de Puerto Rico
Y Límites Municipales

Al 1 de enero de 2023

Edwin M. Vélez Vega, PE, P.E.
 Director General
 Departamento de Transportación y Obras Públicas

Edwin E. González Morfín, PE, P.E.
 Director General
 Autoridad de Carreteras y Transportación

Este trabajo y todos sus componentes están protegidos por derechos de autor y están reservados. Por lo tanto no puede ser utilizada con propósitos comerciales.

**FIGURE 1-A: LOCATION OF PR-10 PROJECT FROM ARECIBO TO PONCE AND PROPOSED PROJECT
UTUADO-ADJUNTAS**



FIGURE 1B: AERIAL PHOTO DESCRIBING THE PROPOSED SECTION OF PR-10

PR-10 SEGMENT PROPOSED ALIGNMENT



Source: PRHTA Online Presentation | <https://act.dtop.pr.gov/wp-content/uploads/2023/06/Presentacion-junio-2023.pdf>

FIGURE 2: FEDERAL HIGHWAY SYSTEM OF PUERTO RICO

National Highway System : Puerto Rico

U.S. Department of Transportation
Federal Highway Administration

- ✕ Airport
- Intercity Bus Terminal
- Ferry Terminal
- ▲ Truck/Pipeline Terminal
- ◆ Multipurpose Passenger Facility
- ⚓ Port Terminal
- Truck/Rail Facility
- ⓧ AMTRAK Station
- Public Transit Station
- Eisenhower Interstate System
- Other NHS Routes
- Non-Interstate STRAHNET Route
- Major STRAHNET Connector
- Intermodal Connector
- Intermodal/STRAHNET Connector
- Unbuilt NHS Routes
- Census Urbanized Areas
- Water
- Department of Defense



Source: September 16, 2009



FIGURE 3: PROPOSED PROJECT ALIGNMENT



FIGURE 4: TYPICAL CROSS SECTIONS OF THE PROPOSED HIGHWAY
(Cross section shall be adapted to the specific condition of the project area)

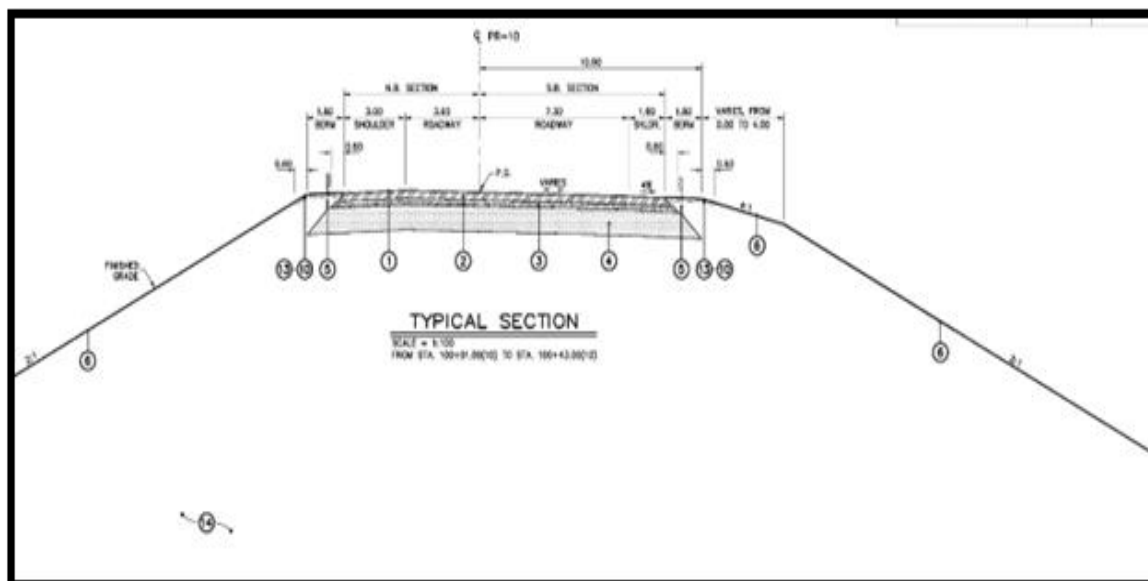
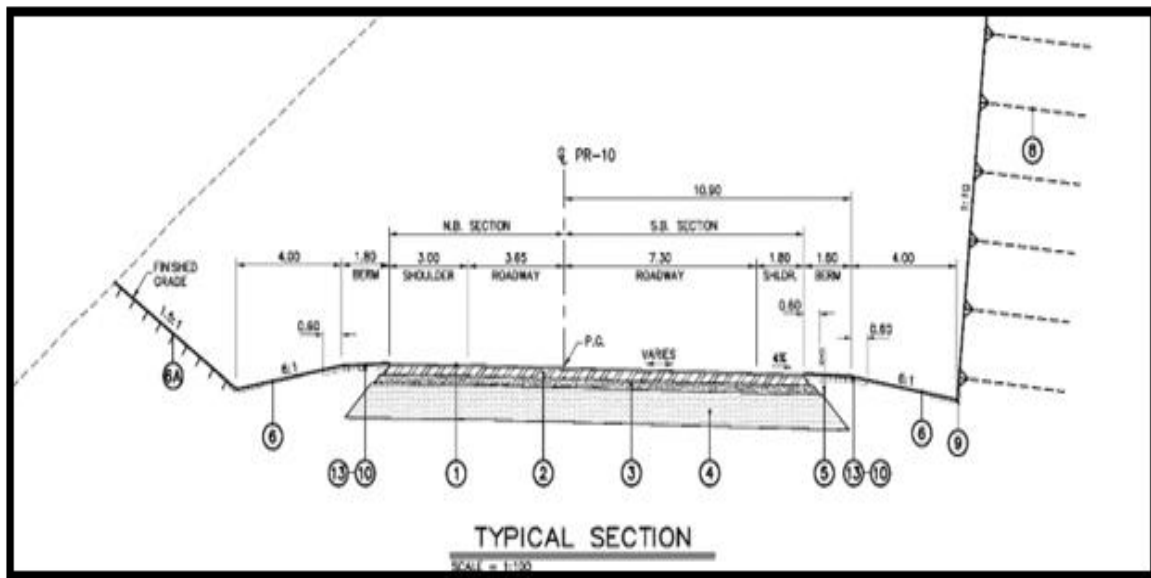


FIGURE 5: DEIS ALIGNMENT ALTERNATIVES IN THE PROPOSED PROJECT REGION

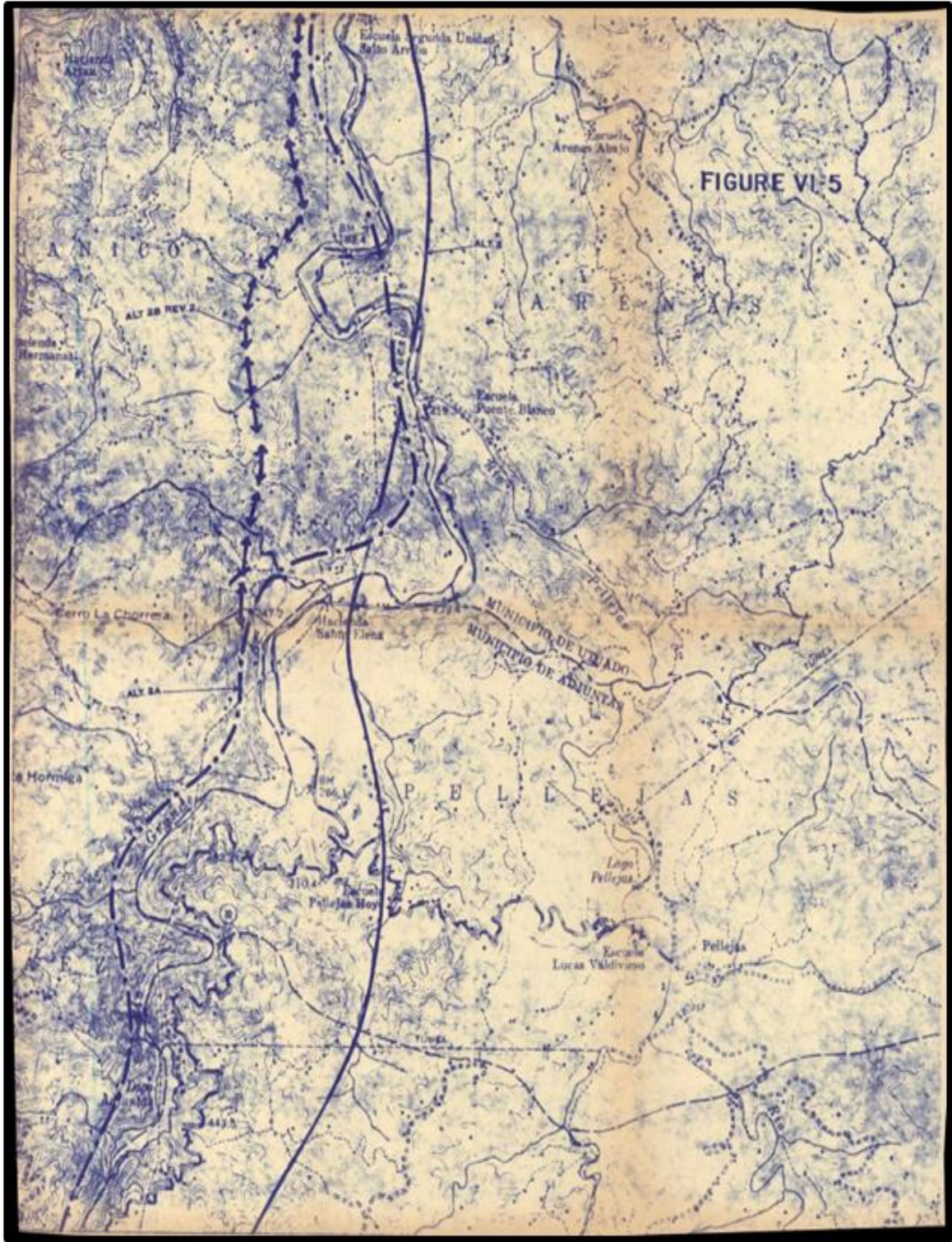
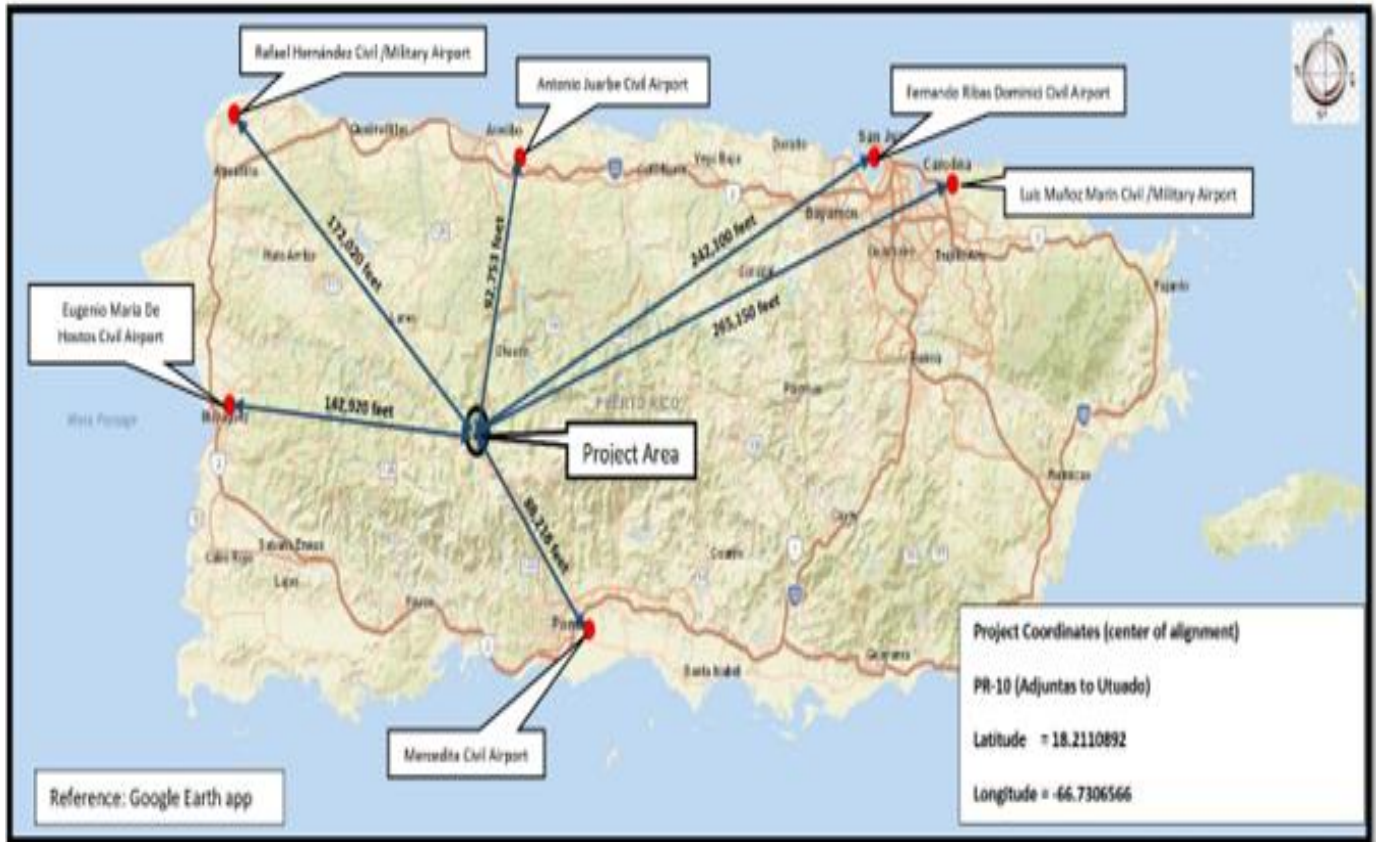


FIGURE 6: ALTERNATIVE ALIGNMENTS OF THE FEIS



FIGURE 7: AIRPORT HAZARDS MAP



CIVILIAN AND MILITARY AIRPORTS MAP
PR-10

FIGURE 8: COASTAL BARRIER ZONES MAP

Coastal Barrier Resources System PR-10 Alignment



- CBRS Unit Type**
 Otherwis Protected Area
 System Unit
 CBRS Buffer Zone
 Source: USFWS, 2019.
- PR-10
 Municipio
 PR10_cbrs_near

Nearest CBRS Name	Distance to PR-10 in miles
Bahia de Tallaboa	13.72

FIGURE 9: FLOOD ZONES MAP

PR-10 Alignment Advisory Base Flood Elevation Map (ABFE)



- | | |
|----------------------------|-----------------------------|
| Flood zone, subtype zone | Base Flood Elevation (feet) |
| A | PR-10 Alignment |
| A.FLOODWAY | Panel |
| AE | |
| AE Coastal A Zone | |
| AE Coastal A Zone.FLOODWAY | |
| AE.FLOODWAY | |
| AO | |
| VE | |

Source: FEMA/FRR, 2018.



FIGURE 10: EPA DESIGNATED NON-ATTAINMENT AREAS FOR AIR QUALITY

Location Map of CO Significant Sources and Non-attainment areas with respect to PR-10 Project (Not caused by transportation related sources)

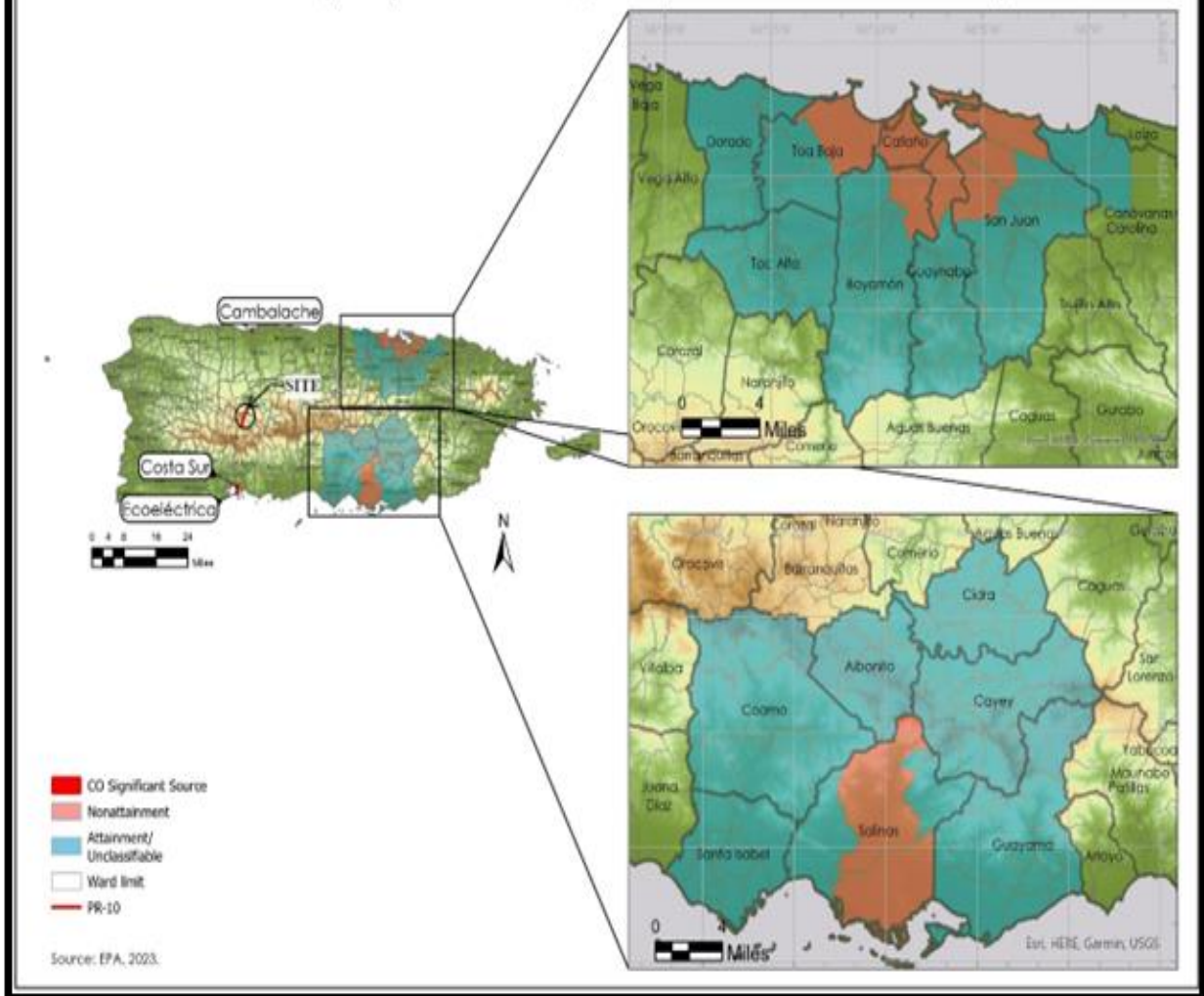


FIGURE 11: LOCATION OF DNER AIR QUALITY MONITORING STATIONS

Puerto Rico Air Monitoring Network 2022 Carbon Monoxide (CO)



SOURCE: DNER Air Quality Annual Report 2022

EQB Id	County	AQS
EQB 20	Guaynabo	72-061-0006
EQB 21	Caguas	72-025-0007
EQB 30	San Juan	72-127-0003
EQB 37	Bayamon	73-021-0010
EQB 56	Ponce	72-113-0004



Air Monitoring, Validation, Data Management, Air Dispersion Model Division
Air Quality Area

FIGURE 12: COASTAL ZONES MAP

PR-10 Alignment Nearest Coastal Shoreline



— Nearest Coastal Shoreline Distance (19.45 Km)
— PR 10

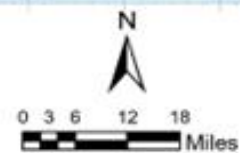


FIGURE 13: LOCATION OF EPA REGULATED FACILITIES THAT HANDLE REGULATED AND TOXIC SUBSTANCES

FIGURE 14: CRITICAL HABITATS LOCATION MAP FOR PUERTO RICO

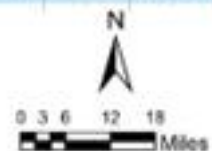
Critical Habitat PR-10 Alignment



Source: USFWS, 2021.

USFWS Critical Habitat for: — PR-10 Alignment

- Agelaius kanehi
- Anolis roosevelti
- Atlantaia fulva
- Eultherodactylus cooki
- Eultherodactylus jasper
- Geothlypis trichas
- Gonocatalyx cancella
- Vireo magister
- Agelaius kanehi
- Vireo magister



Nearest Critical Habitat for:	Critical Habitat distance to PR-10 in miles
Atlantaia fulva	0.07

FIGURE 15: FARMLANDS DESIGNATED AREAS MAP

FIGURE 16: FLOOD ZONE MAP OF THE CROSSING OF RIO GRANDE DE ARECIBO

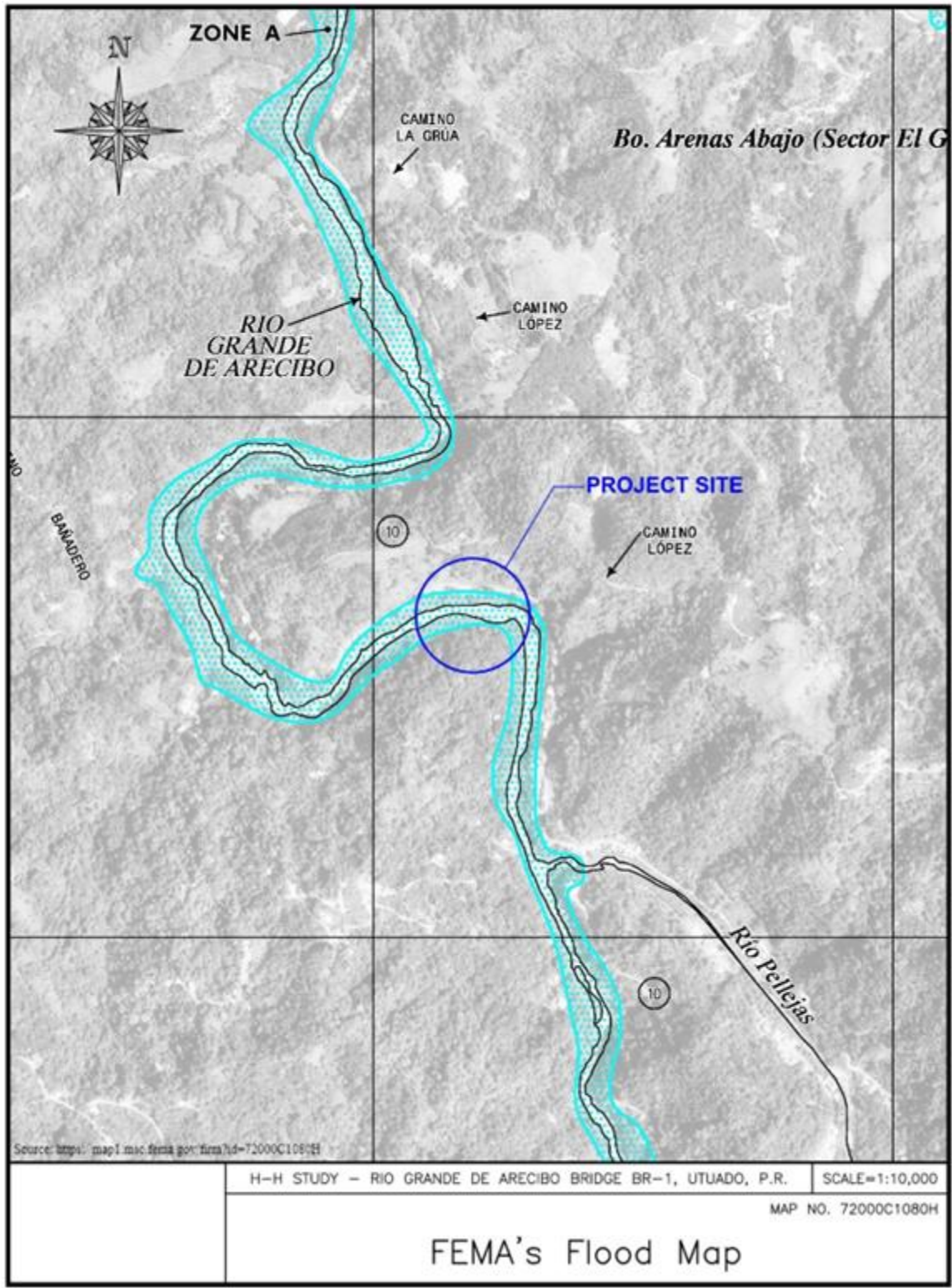
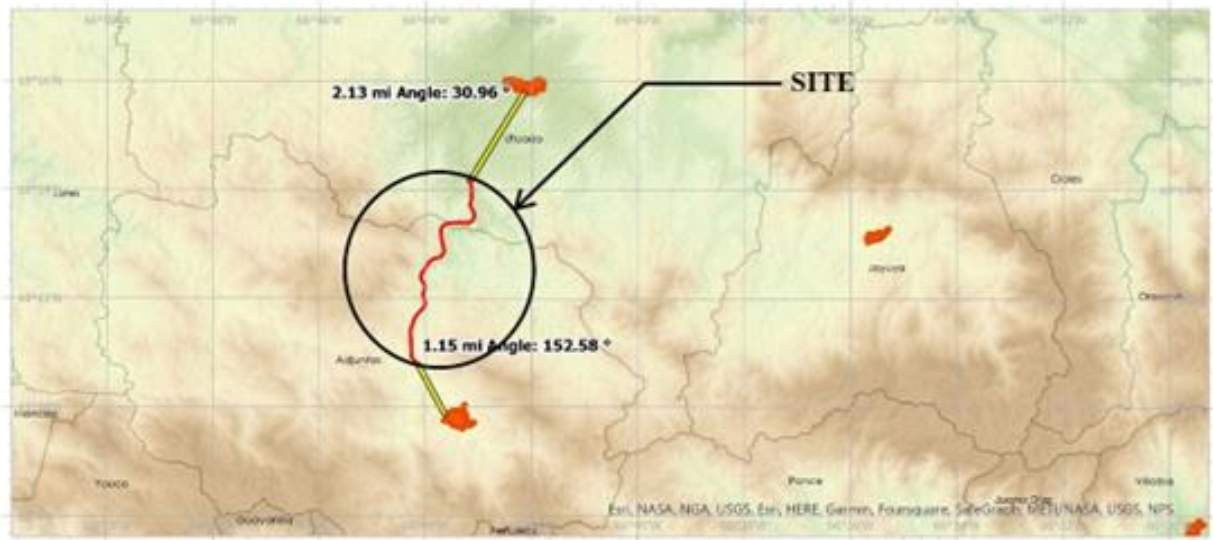


FIGURE 17: TRADITIONAL URBAN CENTERS MAP

Traditional Urban Center Map PR-10 Alignment



Source: PRPB, 2000.

- PR-10
- Urban Center
- Administrative legal boundary
- Distance to Urban Centers (miles)



FIGURE 18: SOLE SOURCE AQUIFER MAP

EPA Designated Sole Source Aquifer PR-10 Alignment

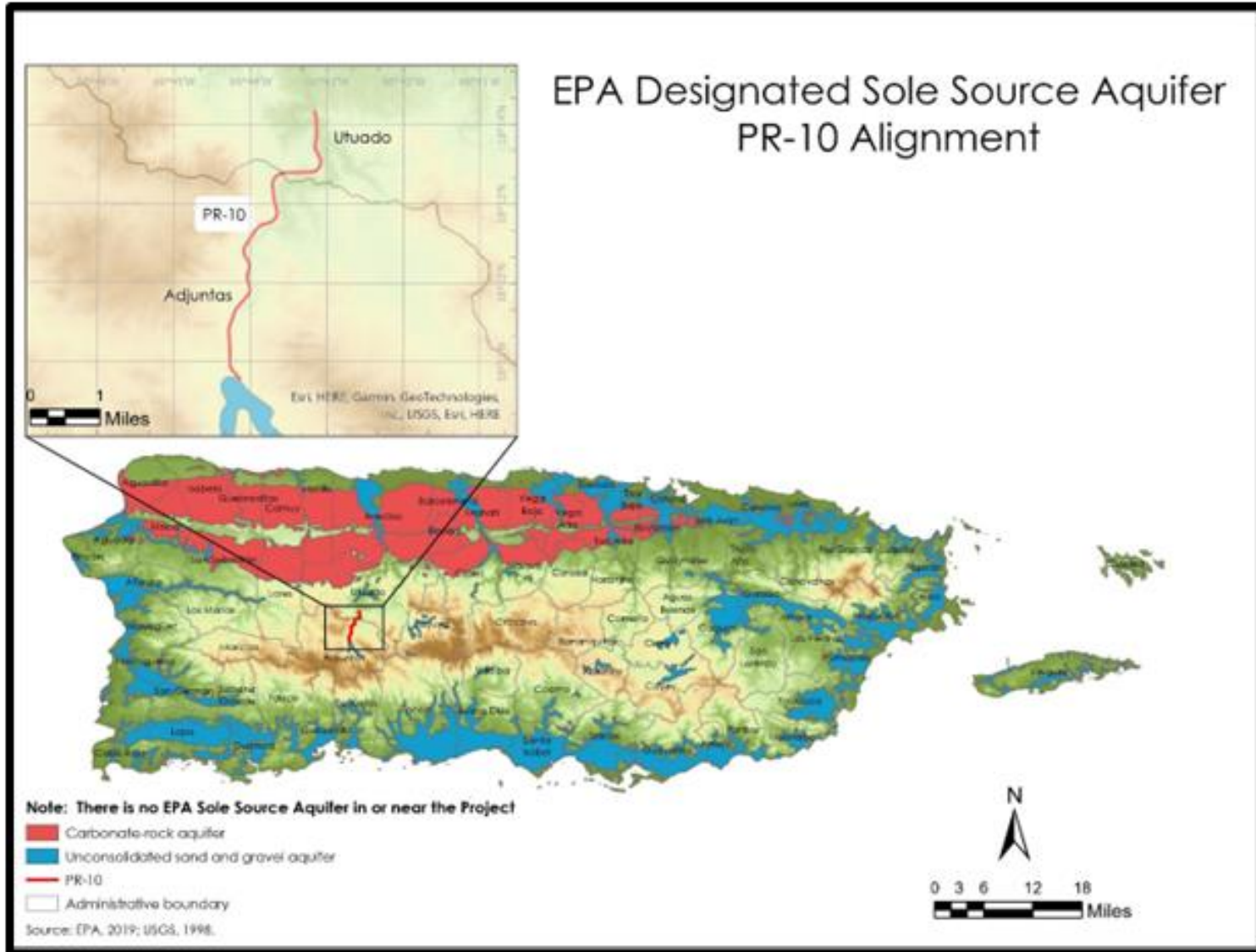


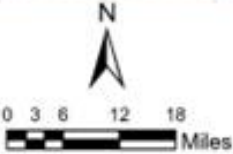
FIGURE 19: WILD AND SCENIC RIVERS MAP

National Wild and Scenic River PR-10 Alignment



Source: USFS, 2023.

- National Wild and Scenic River — PR-10 Alignment
- Rio De La Mina
 - Rio Icacos
 - Rio Mameyes
 - Rio Mamey



Nearest Scenic River Name	Distance to PR 10 in miles
Rio Icacos	61.16

FIGURE 20: SOILS MAP

FIGURE 21: LANDSLIDES SUSCEPTIBLE MAP OF THE PROJECT AREA

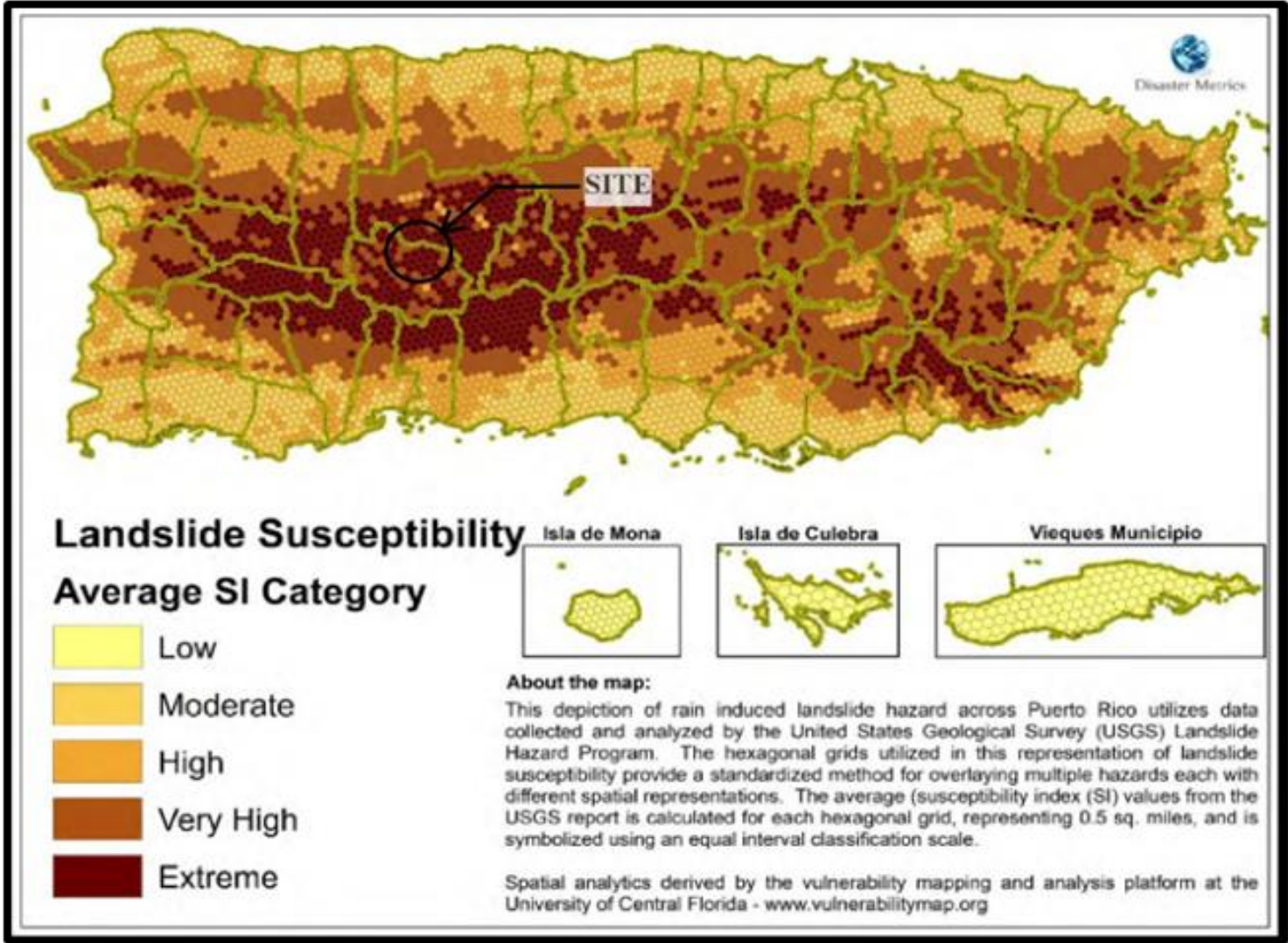


FIGURE 22: PARKS, OPEN SPACES AND RECREATIVE AREAS MAP

Recreational Infrastructure and PR-10 Alignment



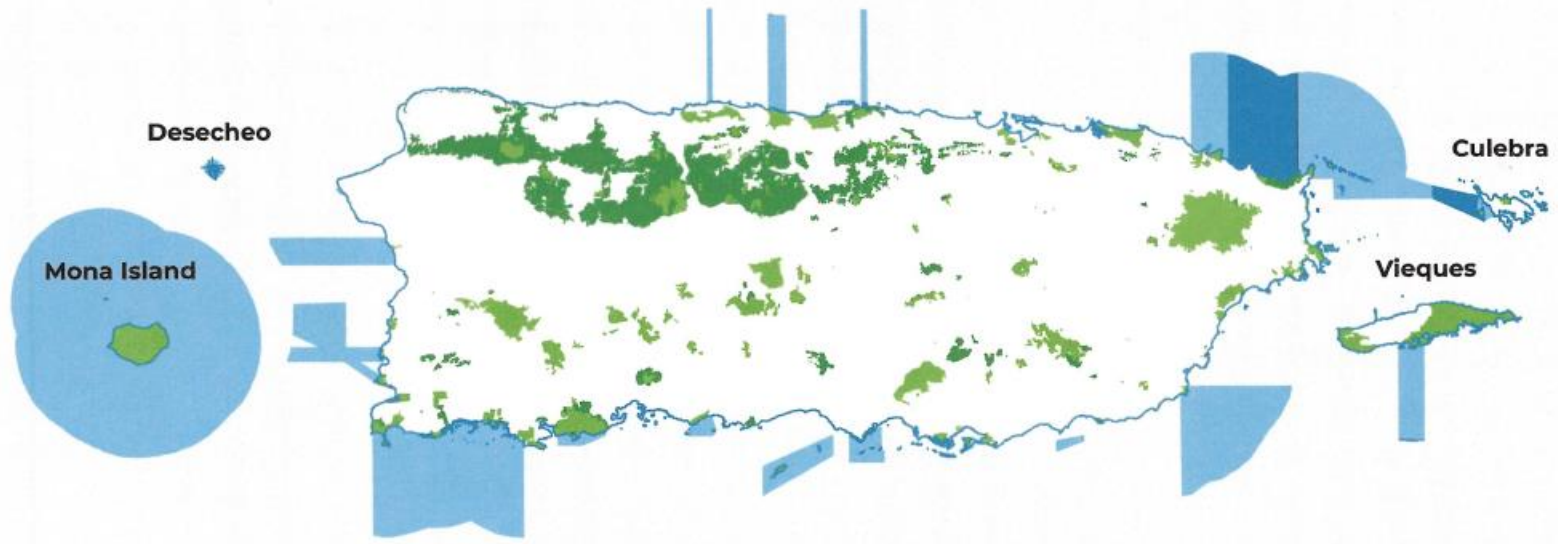
Source: Google Earth.

- Park
- PR-10
- Administrative Boundary



FIGURE 23: PROTECTED AREAS MAP

PUERTO RICO



PROTECTED AREAS

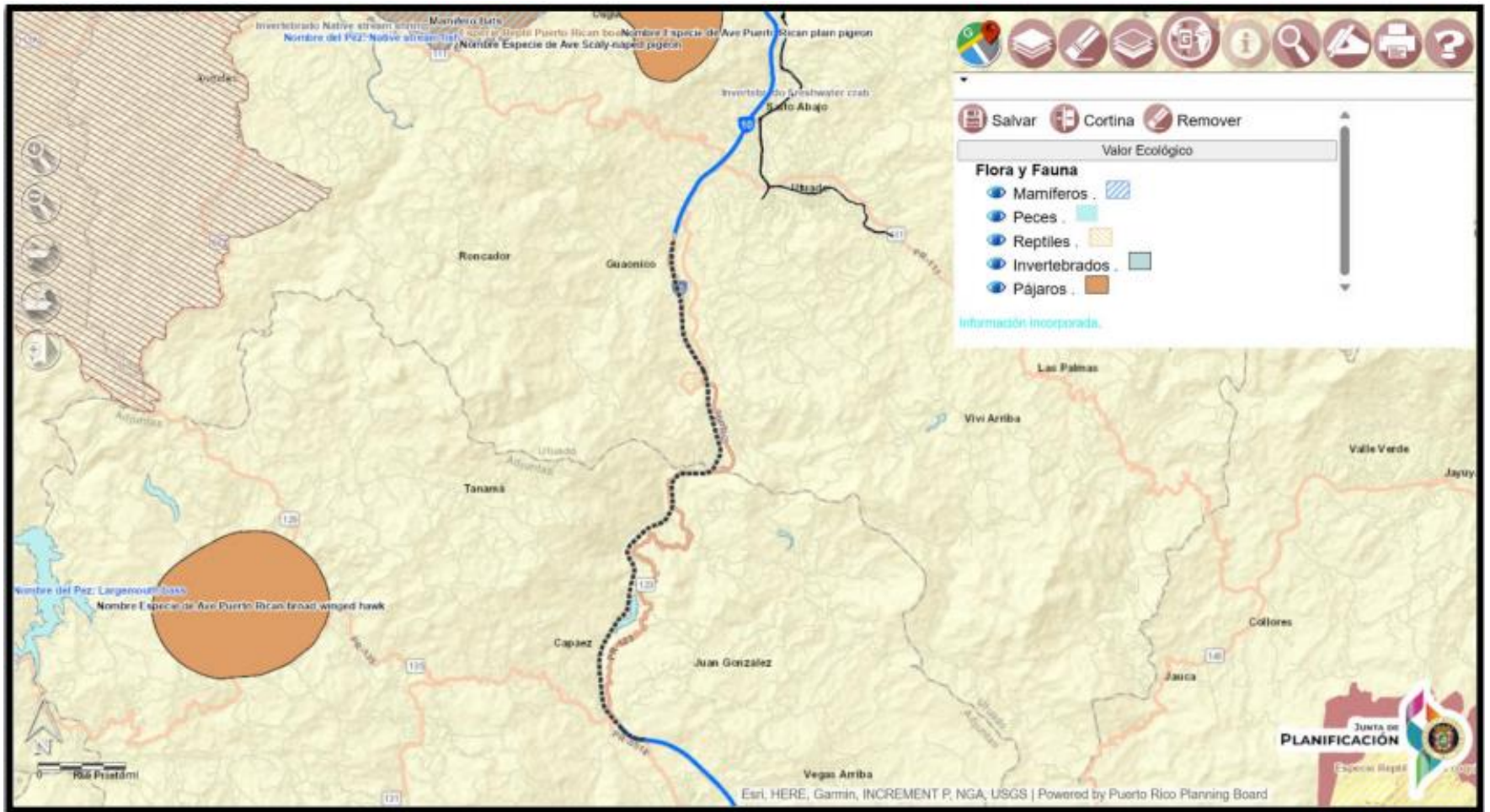


FIGURE 6. Map of protected areas in Puerto Rico comparing the information available before the comprehensive inventory when terrestrial protected areas occupied approximately 8.6 percent.

* Includes protected areas with updated boundaries and new protected areas.

FIGURE 24A: FOREST AND RESERVES MAP
OBTAINED FROM PUERTO RICO INTERACTIVE RESOURCE
FROM THE PUERTO RICO PLANNING BOARD

**FIGURE 24B: FLORA/FAUNA DESIGNATED HABITATS
OBTAINED FROM THE PUERTO RICO NTERACTIVE RESOURCE
FROM THE PUERTO RICO PLANNING BOARD**



**FIGURE 24C: DESIGNATED HABITATS OBTAINED
FROM THE PUERTO RICO INTERACTIVE TOOL PF
THE PUERTO RICO PLANNING BOARD**

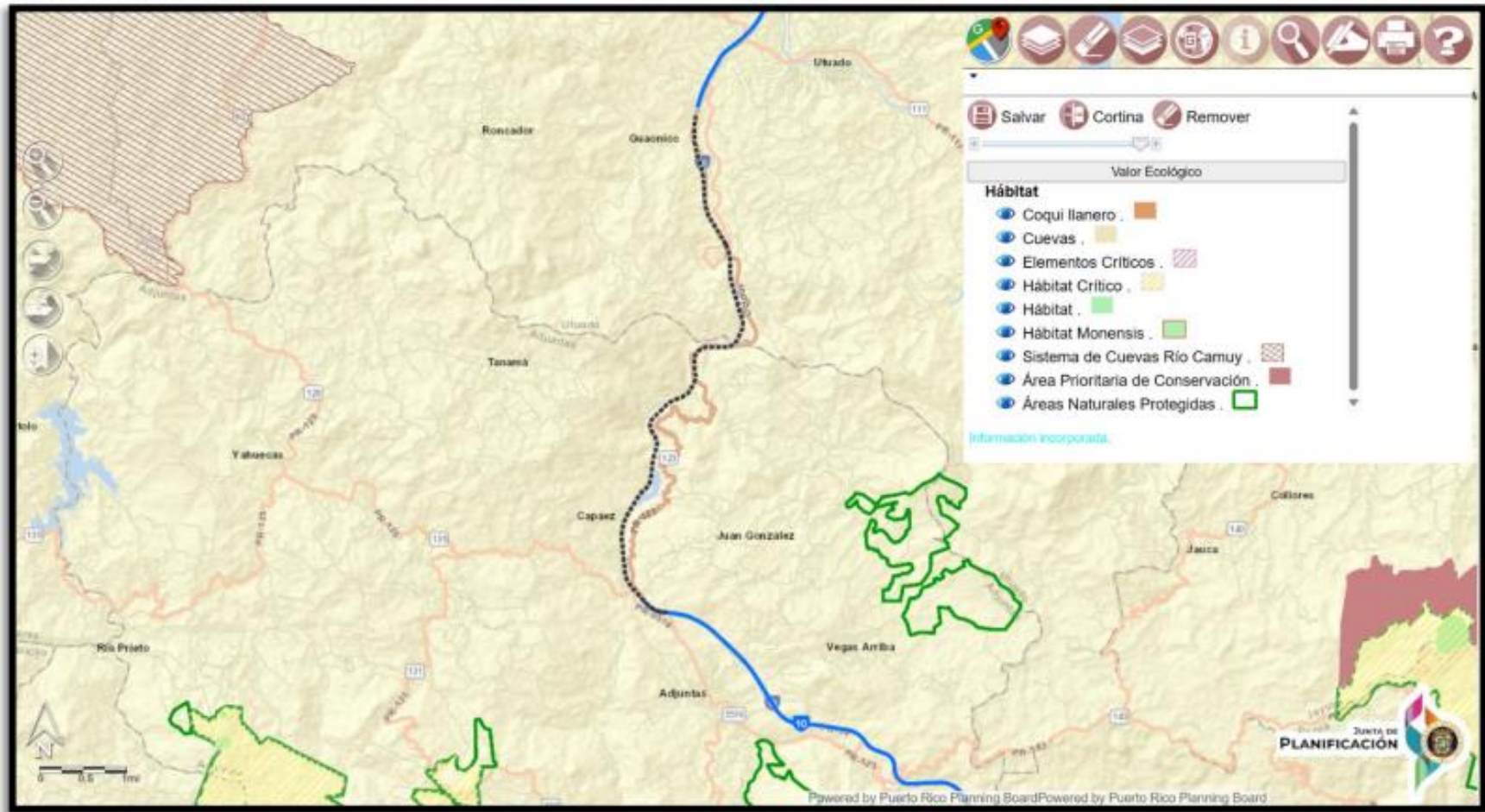


FIGURE 25A: LAND COVER MAP

Puerto Rico State Wildlife Action Plan

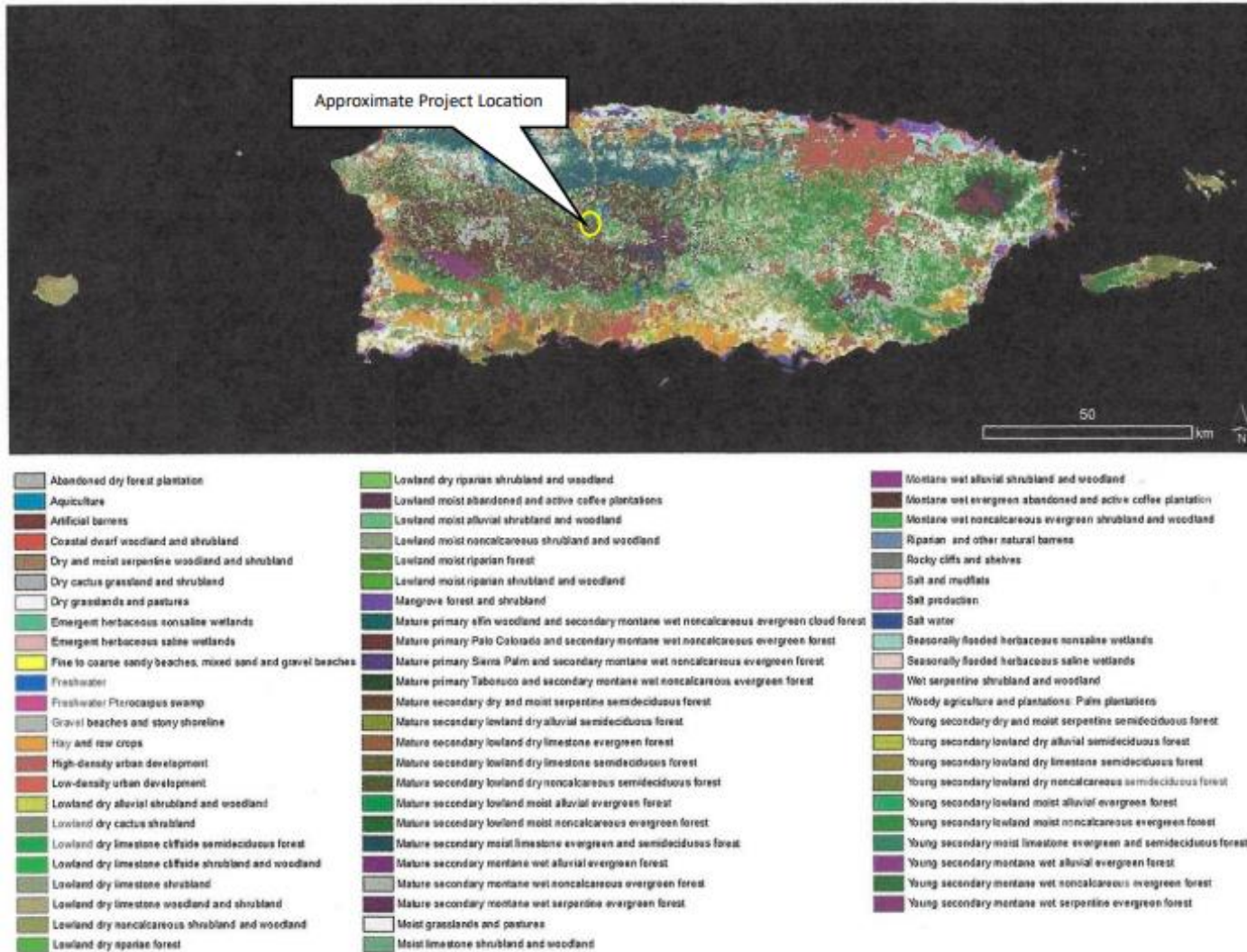


Figure 5. Puerto Rico Land Cover 2015. Data obtained from DNER.

FIGURE 25B: LAND STEWARDSHIP MAP

Puerto Rico State Wildlife Action Plan

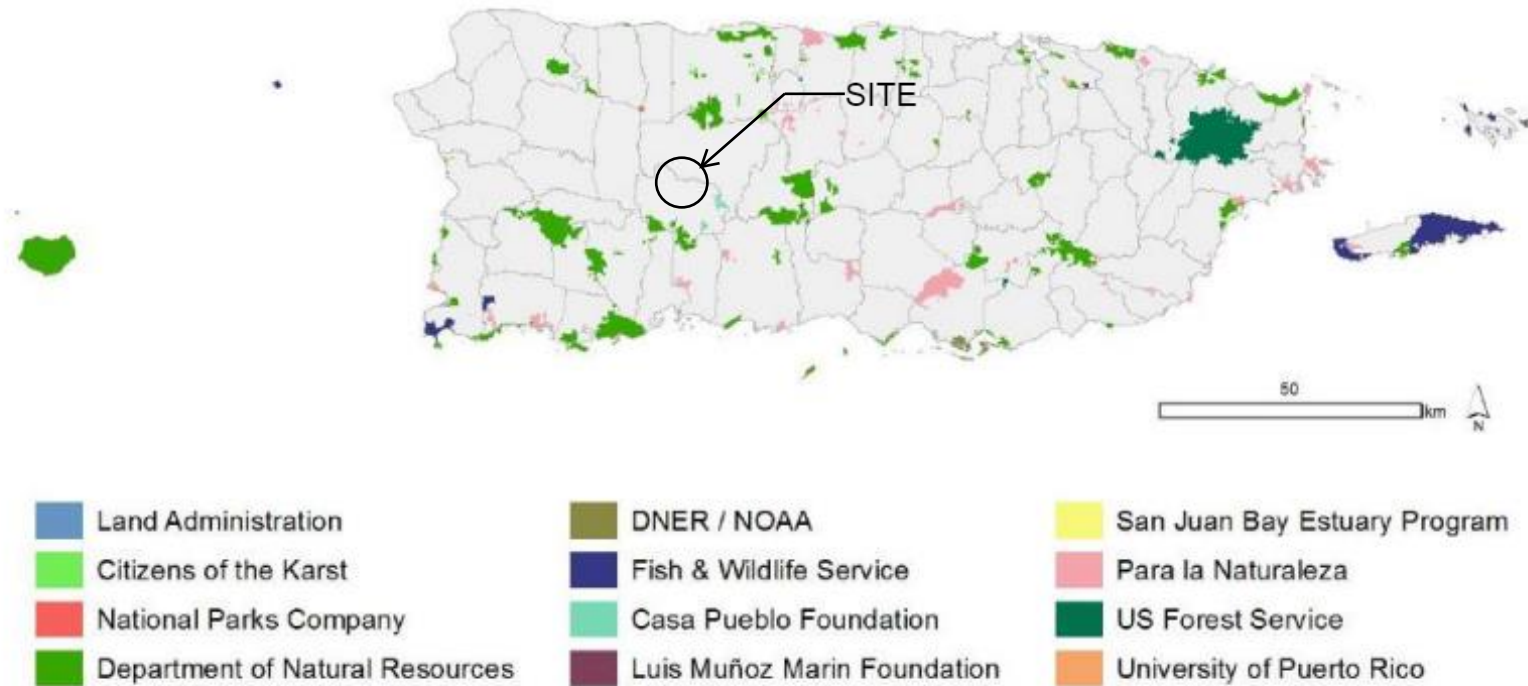


Figure 7. Puerto Rico Land Stewardship 2015. Data obtained from DNER.

FIGURE 25C: CRITICAL ELEMENTS MAP

Puerto Rico State Wildlife Action Plan

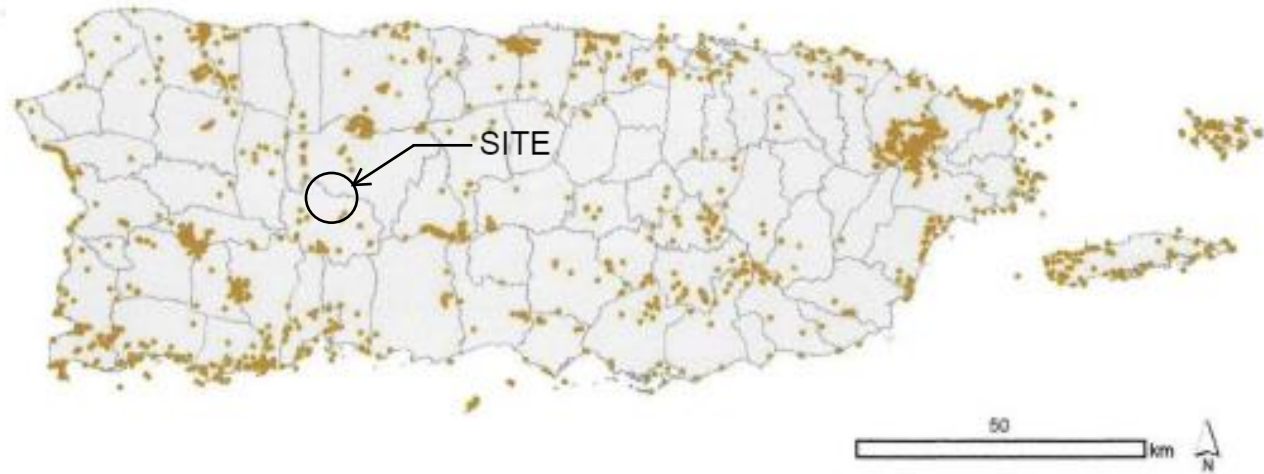


Figure 9. Distribution of Critical Elements in the Natural Heritage Program. Data from DNER 2015.